

SOUTH GRAND BAY GIN POLE GUY TOWER STACK

SERVICE AREA: Tower Construction

LOCATION: South Grand Bay, Alabama

SCOPE: Assembly of a 305 ft Guy Tower Utilizing a Gin Pole.

CUSTOMER: Tillman Infrastructure, AT&T

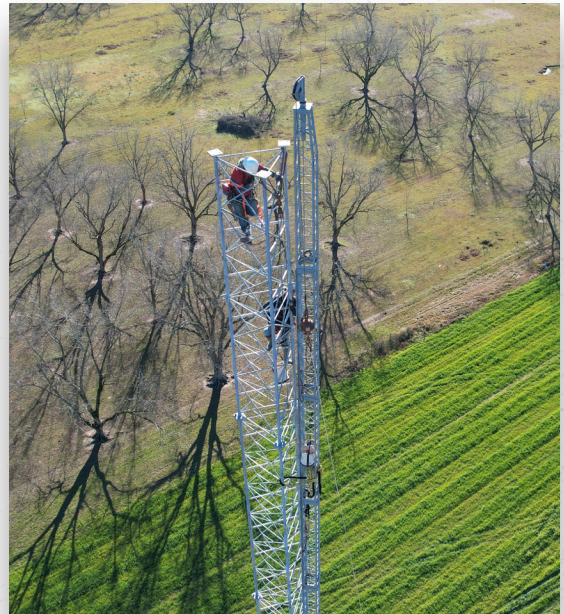
DATE: January 2024

Despite advances in modern technology, the Southern area of Grand Bay, Alabama often struggled with cell service. Tillman Infrastructure and AT&T contracted Gulf Services to install a 305ft cell tower to improve reception throughout the area.

With the necessary height of the tower, the expense of securing a crane to install the segments would have been significant. Instead, Gulf Services' utilized the specialized skill of their crews to stack the guy tower with a gin pole.

Tower technicians climbed the initial section of the tower, and crews on the ground utilized a winch to hoist each section while the technicians installed each piece. The gin pole would then be lifted higher and the next section brought in and attached while the crew stayed up on the tower the entire time.

With the help of some beautiful weather, incredible attention to safety, and specialized training, the tower was completed in just one day. The tower now provides cellular service to the area, bringing the small town the connection they require.



5540 Business Parkway, Theodore, AL 36582
251-653-5075 | www.gulfservices.us